

FACADE PANELS

Maintenance-free facade panels



Modern facades designed for Scandinavian weather and construction.

WALLTEC FACADEPANELS

Walltec facade panels are high-quality compact laminate and fall under the category of maintenance-free facade panels.

Walltec facade panels are lightweight and strong, making them easy to handle. They can be used as the primary weather barrier in ventilated facade constructions. They are suitable for all heights and can also serve as decorative interior panels where high moisture requirements exist.

Due to their properties and high tensile strength, they are also highly suitable for challenging environments, such as coastal areas, as well as for use in schools, institutions, and similar settings.

Walltec maintenance-free facade panels are extremely color-stable, and come with a 10-year product guarantee, as well as a 10-year guarantee on color fastness according to DS/EN 20105-A02:1994.

**Find warranty certificate and terms
on our website www.walltec.co**





MINIMAL MAINTENANCE

With today's focus on both maintenance and sustainability, there is a much greater tendency to choose strong and long-term solutions that do not require ongoing maintenance and thus investments.

Walltec facade panels have a documented lifespan of up to 40 years and are characterized by a sealed core/surface, making them virtually maintenance-free and easy to clean. Dirt, dust, pollen, and moisture only settle superficially and can be cleaned with ordinary soapy water.

These strong properties make our facade panels highly resistant to the harsh effects of the Danish climate.

SORTIMENT

FRONTLINE LIGHT

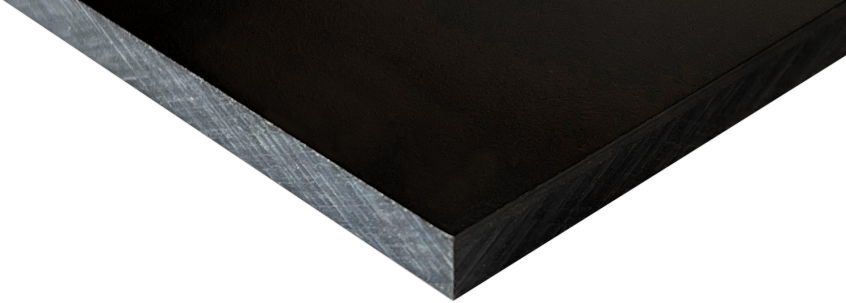
Walltec Frontline Light is a solid-colored compact laminate panel available in light colors



FRONTLINE DUO UV+

Walltec Frontline Duo UV+ is a 2-colored reversible compact laminate panel coated with UV film on the darker side.



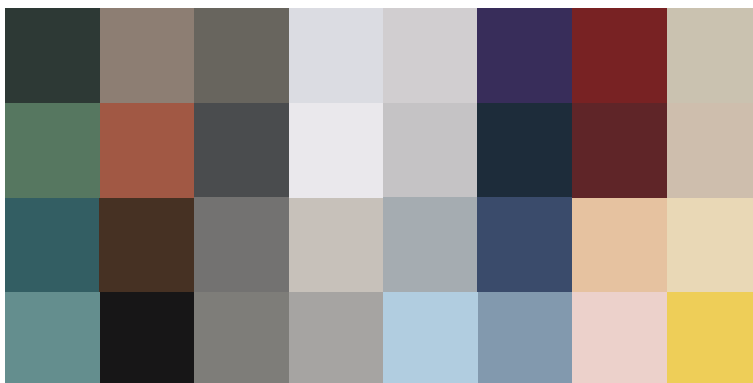


FRONTLINE COLOR UV+

Walltec Frontline Color UV+ is a solid-colored compact laminate panel with UV film and a wide range of color options



DESIGN / OPTIONS



Walltec panels can be cut and shaped to fit the desired expression in the given project. They can be mounted both horizontally and vertically. We stock 5 standard colors, but an additional 40 colors can be obtained according to our color chart

ABOUT THE FACADE PANEL

Material

The panel is based on wood fibers in the form of kraft paper, which is pressed, hardened, and mixed with phenolic resin, supplemented with a decorative surface in colored decorative paper and lamination on the outer sides. Due to this construction, Walltec facade panels are sealed in both core and surface. Moisture and living organisms cannot penetrate the panel, and edges do not need to be sealed or processed after cutting.

Walltec maintenance-free facade panels are extremely color-stable, and come with a 10-year product guarantee, as well as a 10-year guarantee on color fastness.*

Shaping

The panels are supplied as standard in 6 mm thickness and dimensions of 1300 x 3050 mm. Our Frontline Duo UV+ can be supplied in dimensions of 1220 x 2440 mm. Other thicknesses and dimensions can be ordered. We offer cutting and pre-drilling of screw holes as needed.

Application

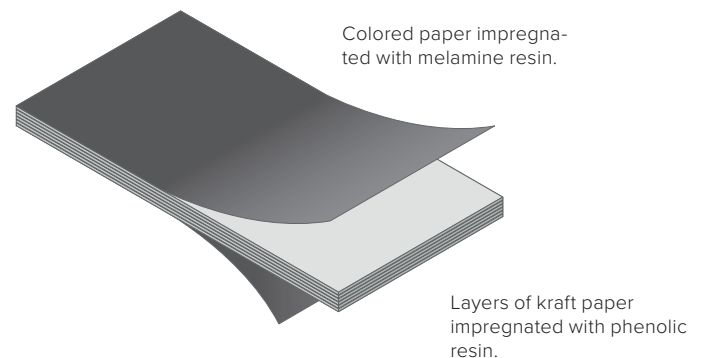
Primary weather barrier in ventilated facade constructions. Suitable for all heights, and as a decorative interior panel where high moisture requirements exist

- Exterior walls - facade panels
- Interior spaces and partitions
- Balconies
- Gables and dormers
- All types of panels
- Overhangs
- Windows and sills
- Fascia and parapets

Environment

In our production, all necessary procedures are employed to ensure the best environmental performance and sustainability. For example, a minimum of 20% recycled paper is used in the production of laminate, and all other materials are sourced only from FSC-approved manufacturers

Construction



1430 psi at 150 degrees.

Color

Frontline Light standard colors:

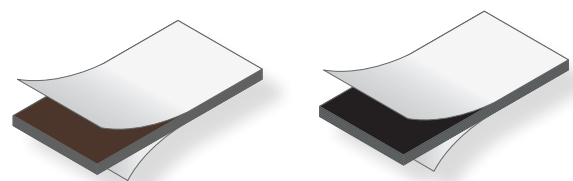
- White RAL 9010
- Light gray RAL 7035
- Dark brown core
- Available in custom colors according to color chart

Frontline Color UV+ standard colors:

- Black RAL 9005
- Anthracite RAL 7016
- Black core
- Available in custom colors according to color chart

Frontline Duo UV+ standard colors:

- Black RAL 9005 and light gray RAL 7035
- Anthracite RAL 7016 and white RAL 9010
- Dark brown core



* Manufacturer's product warranty for a period of 10 years is extended from the date of purchase. The warranty covers only the product and not the installation. Find warranty certificate and terms on our website www.walltec.co

PROPERTIES

When Walltec facade panels are correctly installed according to our installation instructions, the panels have the following properties:



Water-resistant



Resistant to living organisms



Environmentally friendly



Strong and solid panels



Good sound insulation properties



Fire class B- D-s2, d0



Cost-effective product for cladding



Easy to assemble

Appearance

Surfaces and colors will be affected by UV light and environmental/weather conditions when installed outdoors. There may be slight color differences from the original color after several years. After accelerated climate testing, simulating 10 years of UV light exposure, the colors are still rated at level 4-5** on a gray scale according to DS/EN 20105-A02:1994.

Color stability	Visual result
Level 5	No change
Level 4	Slight changes, barely noticeable
Level 3	Loss of color, noticeable
Level 2	Significant loss of color and gloss, clearly visible
Level 1	Very significant loss of color and gloss, highly visible

Equipment

For Walltec facade panels, a complete range of accessories is provided to ensure a proper and easy installation. The accessories include aluminum profiles, color-matched screws, EPDM tape, saw blades, and more, which together result in a correct installation and long-lasting durability.

Installation

Please refer to our installation guide. NOTE: All panels are supplied in production format and need to be cut to size. They are manufactured and supplied according to EN 438-2. In the production format, rough-cut edges may occur and cannot be expected to be square according to EN 438-2.

** Level 3-5 for Frontline Light

TECHNICAL DATA

Product data	Product requirements according to EN 438-part 6	Tested values
Dimensions - tolerances		
Plate thickness	6,00 ± 0,40 mm	6,15 mm
Length	3.050 + 10/- 0 mm	3.051 mm
Width	1.300 + 10/- 0 mm	1.301 mm
Edge straightness (max.)	1,50 mm/meter	0,90 mm/meter
Flatness (mm) (max.)	5,00 mm/meter	2,50 mm/meter
Flexural modulus (min.)	9.000 Mpa	13.966 Mpa
Flexural strength (min.)	80 Mpa	114 Mpa
Tensile strength (min.)	60 Mpa	66 Mpa
Density, g/cm ³ (min.)	1,35 g/cm ³	1,45 g/cm ³
Water absorption (wet to dry)	8%	3%
Appearance in max wet condition	Level 4	Level 5
Coefficient of thermal expansion		
Lengthwise % max.	0,30%	0,20%
Crosswise % max.	0,60%	0,40%
Resistance to artificial weathering (climate test)	After 650 MJ/m ² irradiation exposure (3000 hours)	Over 3.000 hours
Gray scale assessment - appea-	Level 3	Level 4-5
Resistance to UV light	After 1500 hours of exposure	Over 3.000 hours

Walltec A/S
Nørregade 15
6622 Bække

Call for more information
+45 4698 0808

info@walltec.dk
www.walltec.co

